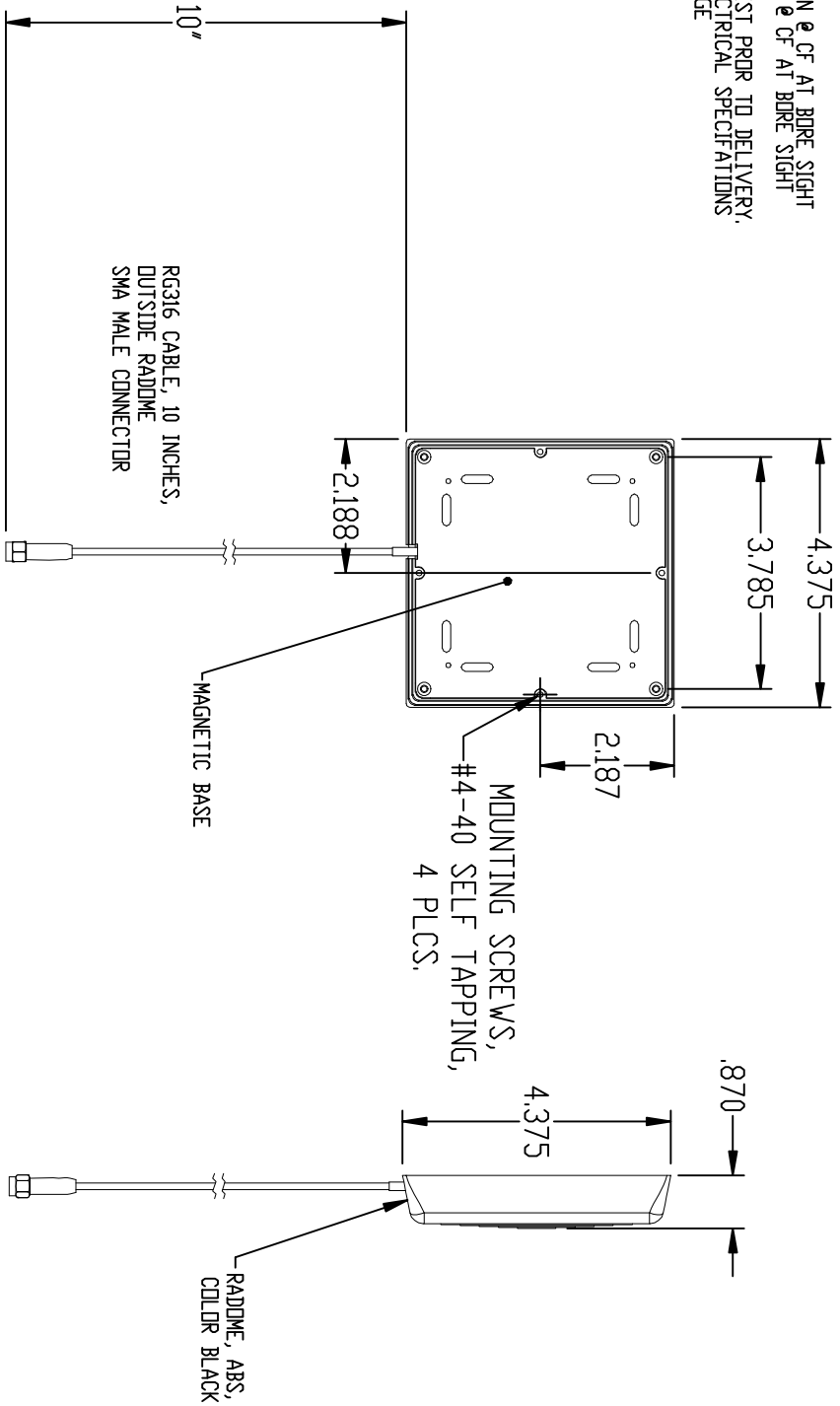


- NOTES:
 1. ELECTRICAL SPECIFICATIONS:
 CENTER FREQUENCY = 915 ±4 MHz
 POLARIZATION: LHCP
 3:1 VSWR B.W. = 30 MHz
 GAIN SHALL BE 3dBIC MIN @ CF AT BORE SIGHT
 A/R SHALL BE 6dB MAX @ CF AT BORE SIGHT
 ZIN = 50 OHMS
 2. 100% ELECTRICAL TEST PROR TO DELIVERY.
 3. FDDI PRINT AND ELECTRICAL SPECIFICATIONS
 ARE SUBJECT TO CHANGE



RG316 CABLE, 10 INCHES,
 OUTSIDE RADDOME
 SMA MALE CONNECTOR

MAGNETIC BASE

MOUNTING SCREWS,
 #4-40 SELF TAPPING,
 4 PLCS,

RADDOME, ABS,
 COLOR BLACK

	FAIRVIEW PENNYSYLVANIA	DESIGNED BY Kouffman	ASSEMBLY ASSEMBLY, 1000P3MA SW316
DATE 6-23-10	ENG Cherason	NO. 1	OF 1
CODE IDENT. NO. 04892			DATE 04/08
THIRD ANGLE PROJECTION			DATE 07/30/08
DO NOT SCALE			DATE 04/08
UNLESS OTHERWISE SPECIFIED DIMENSIONS ARE IN INCHES			DATE 04/08
CHANGE NOTICE			DATE 04/08
02 54907-ENG			DATE 04/08